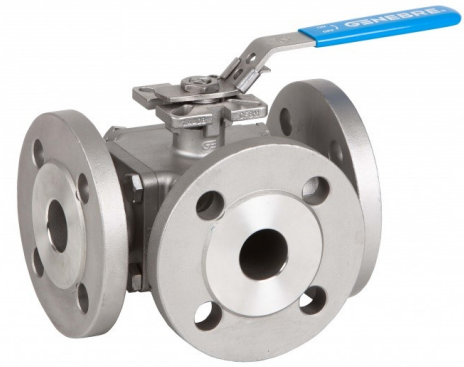




## Main Features:-

- ◆ 3 Ways Full Bore Ball Valve
- ◆ DN25 to DN100 PN16 (PN40 up to DN50)
- ◆ Max. pressure: 16/40 BAR depending on size.
- ◆ Working Temperature -25 to +180C \*

\*Temperature and pressure determined by valve body, seat etc.



## Suitable Applications & Approvals:



HVAC



OIL



GAS



INDUSTRY



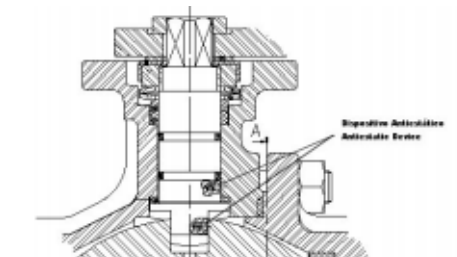
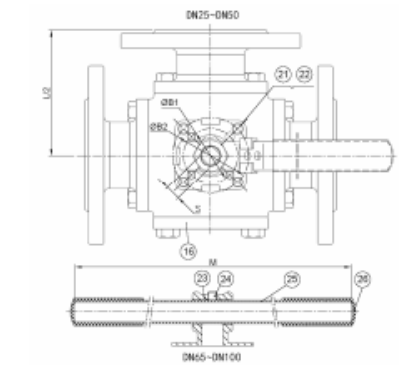
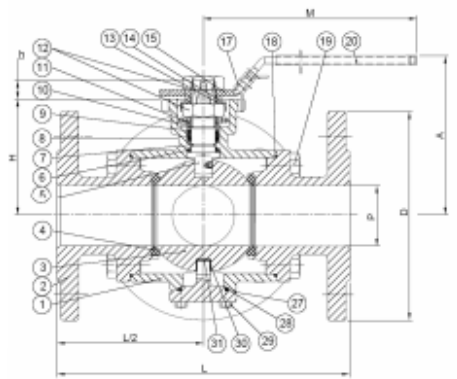
ATEX

## SERIES: 80040

MANUFACTURER: **GENEBRE**

VALVE MATERIALS & DIMENSIONS

ITEM	SECTION	MATERIAL	ADDITIONAL INFO / OPTIONS
1	Body	Stainless Steel 1.4408	Shot blasted
2	Cap	Stainless Steel 1.4408	Shot blasted
3	Ball	Stainless Steel 1.4408	Spares Part Number: B2541
4	Ball Seat	PTFE + 15 GF	Spares Part Number: 2928
5	Stem	SS 316	n/a
6	Thrust Washer	PTFE	Spares Part Number: 2928
7	O'Ring	FKM	Spares Part Number: 2928
8	Stem Packing	PTFE	Spares Part Number: 2928
9	Bushing	Inox.+PTFE/SS+PTFE	Spares Part Number: 2928
11	Spring Washer	SS 301	n/a
14	Washer	SS304	n/a
18	Gasket	PTFE	n/a
19	Bolt	SS304	n/a
31	Disc	PTFE	n/a



REF	SIZE	L	ØD	H	A	M	S	ISO	Kg
80040-06	1"	180	115	68	99	175	11	F04/F05	8.6
80040-07	1 1/4"	190	140	72	103	175	11	F04/F05	11.8
80040-08	1 1/2"	212	150	85	119	200	16	F05/F07	14.7
80040-09	2"	230	165	92	126	200	16	F05/F07	19.7
80040-10	2 1/2"	290	185	107	172	400	17	F07/F10	33.3
80040-11	3"	310	200	119	187	400	17	F07/F10	47.1
80040-12	4"	350	220	150	214	400	22	F10	73.7



T +44 (0)1386 552369

E sales@allvalves.co.uk

W www.allvalves.co.uk

F +44 (0)1386



Genebre are a global brand of industrial valves with large stocks held for fast delivery on various type of valves, sizes, end connections and materials.

## SERIES: 80040

TORQUE / Kv VALUES / PRESSURE & TEMPERATURE CHART

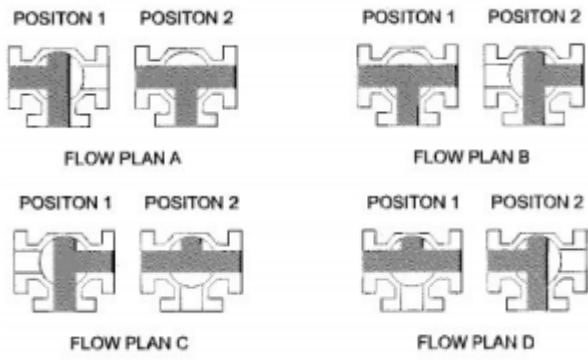
REF	SIZE	TORQUE Nm	REF	SIZE	Kv
80040-06	1"	21	80040-06	1"	39
80040-07	1 1/4"	28	80040-07	1 1/4"	50
80040-08	1 1/2"	38	80040-08	1 1/2"	96
80040-09	2"	51	80040-09	2"	192
80040-10	2 1/2"	82	80040-10	2 1/2"	264
80040-11	3"	135	80040-11	3"	351
80040-12	4"	225	80040-12	4"	653

### TORQUE :

- The liquid listed in the table are initial breakaway torques, taken with liquids and lubricant media.

- Please regard these as approximate values, as the objective value on different factors like pressure, medium, rubber,

### Flow Patterns for " T-PORT" 3 way valves 90°

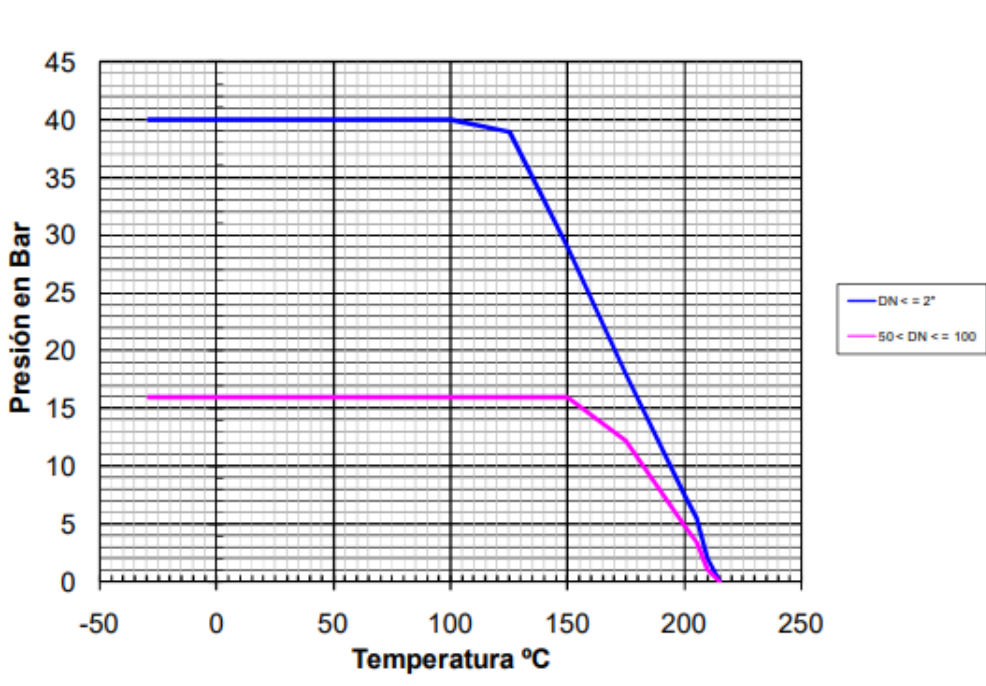


### KV Values

The Kv values (M3 per hour) is the flow of water at a temperature of 5C to 30C (41F to 86F) at p of 1 bar

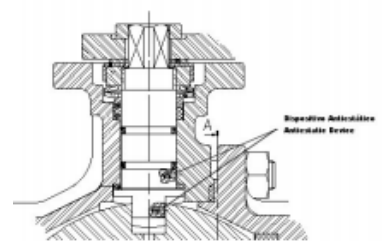
- For further information, please email [sales@allvalves.co.uk](mailto:sales@allvalves.co.uk)

### PRESSURE AND TEMPERATURE CHART



( 1 bar = 0,1 MPa ; 1 MPa = 1 N/mm<sup>2</sup> )

### Anti-static Device



This device ensures the electrical continuity between Ball - Stem - Body, this is of special need in flammable



T +44 (0)1386 552369  
E [sales@allvalves.co.uk](mailto:sales@allvalves.co.uk)

W [www.allvalves.co.uk](http://www.allvalves.co.uk)  
F +44 (0)1386